



**SPREADING LIGHT
ON REGULATIONS
SINCE 1952**



CONTACT US

Via Pasquale Galluppi, 7 - 10134 Torino (ITALY)
secretariat@gtb-lighting.org
www.gtb-lighting.org

GTB

**THE INTERNATIONAL
AUTOMOTIVE
LIGHTING
AND
LIGHT SIGNALLING
EXPERT GROUP**



TABLE OF CONTENTS

2	Table Of Contents
3	Introduction
4	What is GTB
5	Our Team
6	Our Members
7	Companies in GTB
8	Our Services
9	We Provide
10	The Structure
11	Global Cooperation
12	Our Vision
13	Our Mission
14	Our Targets
15	GTB for YOU

Hello there, welcome to GTB!



Introduction

In the field of automotive lighting, technology develops rapidly. These innovations need a legal regulatory framework to ensure traffic safety and sustainability.

The automotive lighting world is truly global, and this is clearly evident from the current developments in the UN World Forum (WP29) as well as from the widening membership of GTB. Thanks to this, GTB is able to represent the interests of the whole value chain of automotive lighting. System suppliers, light source manufacturers, vehicle manufacturers, testing laboratories, research organisations and academia are all part of the GTB Family.

**WE LOOK FORWARD TO FURTHER INCREASE THIS SUCCESS AND
THE INTERNATIONAL AWARENESS AROUND GTB.**

- The GTB Administrative Committee -



What is GTB?

A *Non-Governmental Organization* operative since 1952 and in special consultative status with ECOSOC (the UN Economic and Social Council) since 2014.



A *non-profit Association* totally funded and managed by its membership: the operating costs are shared, and this allows us to provide a high-quality service at low cost for the benefit of all members.

The only global group of vehicle lighting experts supporting the international regulatory process through the combination of their experience and skills as:



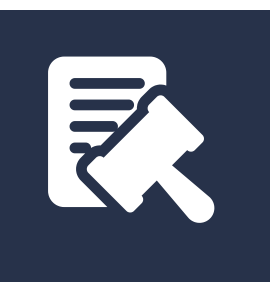
Vehicle manufacturers



Lighting systems manufacturers



Light source manufacturers



Test laboratories

Regulatory agencies



Academia

**“ WE PROVIDE A
UNIQUE OPPORTUNITY
FOR MEMBERS TO BE
INVOLVED IN THE
UN REGULATORY
PROCESS. ”**



The Team



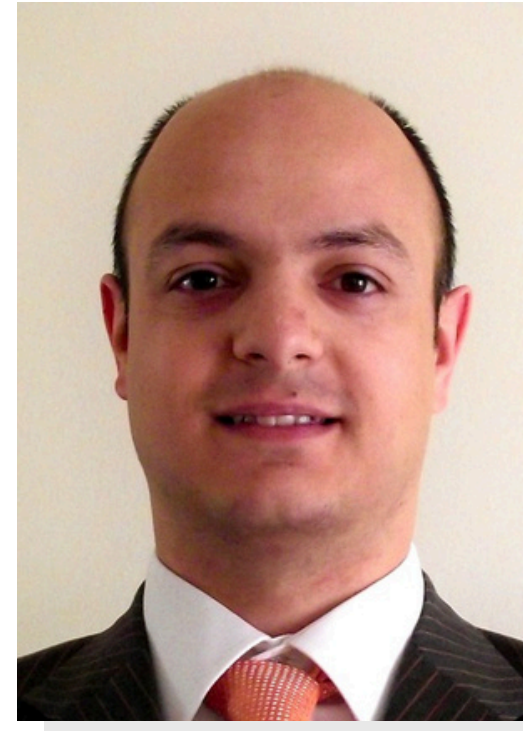
Wolfgang HUHN

President



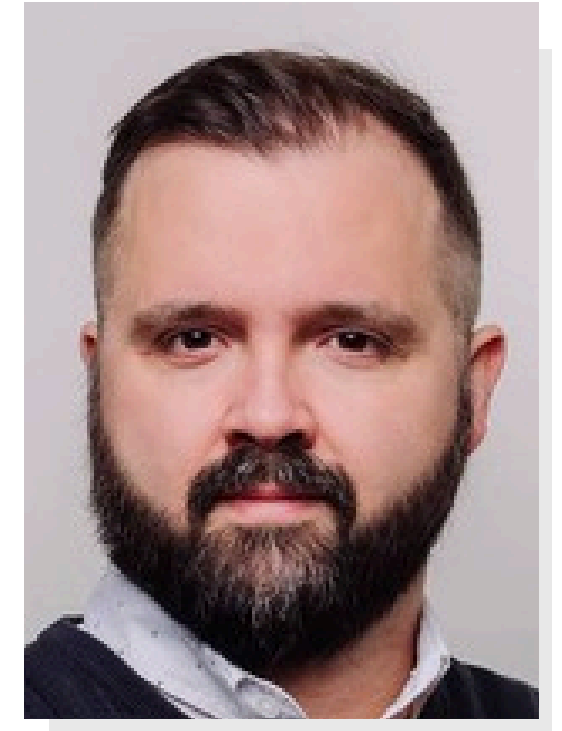
Bart TERBURG

Vice-President



Davide PUGLISI

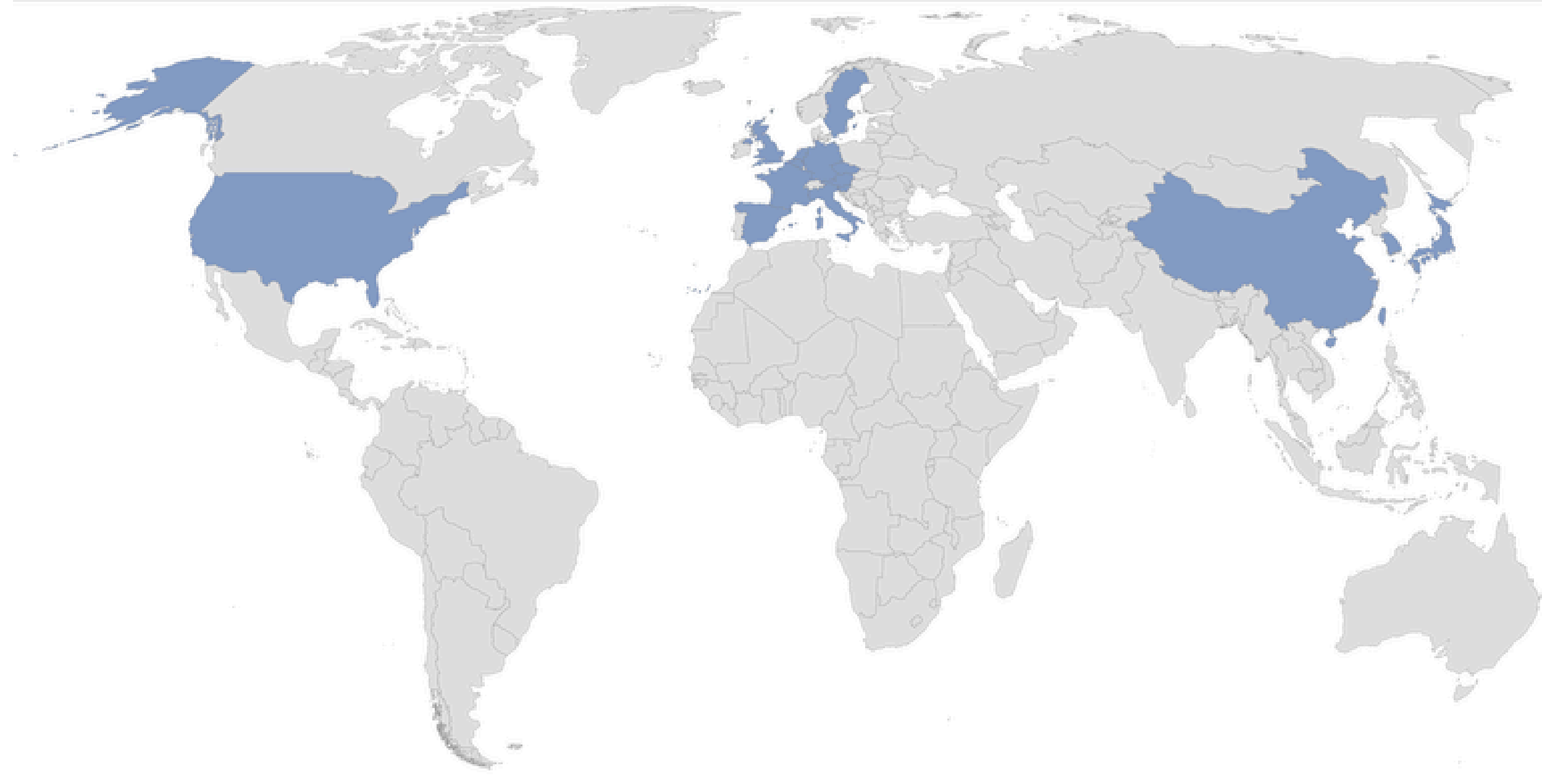
Secretary-General



Federico MATARAZZO

Technical Officer

Our Members



17 MEMBERS

Logos of 17 member organizations:

- CNTARC** 中国汽车技术研究中心 / China Automotive Technology & Research Center
- AGORIA**
- VLA**
- IMMA** INTERNATIONAL MOTORCYCLE MANUFACTURERS' ASSOCIATION
- UNE** Normalización Española
- SAE INTERNATIONAL**
- SMMT** DRIVING THE MOTOR INDUSTRY
- SDR** SLOVENSKO DRUŠTVO ZA RAZSVETLJAVO / LIGHTING ENGINEERING SOCIETY OF SLOVENIA
- CUNA** Commissione Tecnica di Unificazione nell'Autoveicolo / Ente federato all'UNI
- NSVV**
- JAPIA** Japan Auto Parts Industries Association
- fi FAHRZEUG INDUSTRIE** FACHVERBAND DER FAHRZEUGINDUSTRIE ÖSTERREICHS
- PFA** FILIÈRE AUTOMOBILE & MOBILITÉS
- VDA** Verband der Automobilindustrie
- TS** Korea Transportation Safety Authority / Korea Automobile Testing & Research Institute
- SIS** Svenska Institutet för Standarder
- ČNK CIE**

WORLDWIDE
COMPANIES
IN GTB

Our Services



PROMOTE

Safety

Avoiding regulatory barriers

Removing unnecessary administrative burden to innovation and international trade



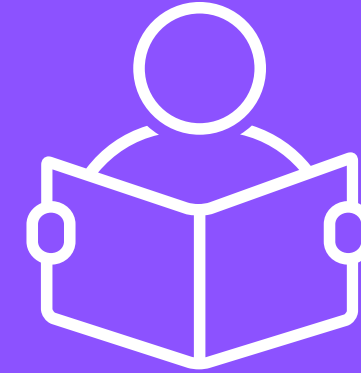
INVESTIGATE

the safety, economic and environmental implications of the technical developments with a view to their practical application



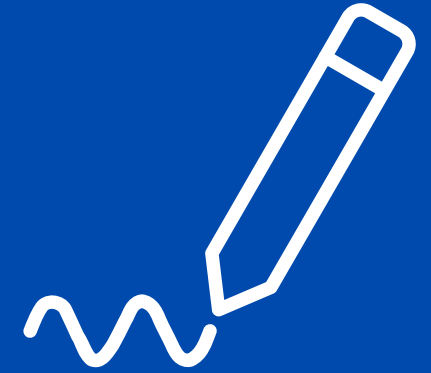
FACILITATE COOPERATION

of both technical and administrative experts coming from all disciplines involved in road vehicles lighting, considering operational and cultural aspects of the different countries



STUDY & DISCUSS

new technical developments regarding all aspects of automotive lighting, light sources, lighting functions and their installation in the vehicle: this includes sponsoring independent research carried out by globally acknowledged institutes



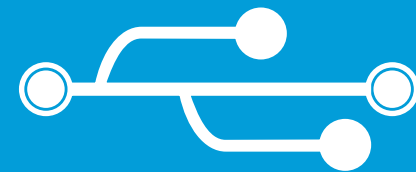
PREPARE PROPOSALS

for new or amended UN Regulations and standards for testing, approval and certification of vehicle lighting, light signalling systems and light sources

WE PROVIDE

AN EFFECTIVE CHANNEL

*for contributing to the
UN regulatory process*



A COMMON GOAL
*to facilitate traffic safety
and economic advantage*



A PLATFORM

*for funding independent
research studies to support with
scientific evidence the
regulatory proposals*



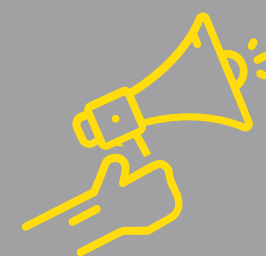
UP-TO-DATE CONSOLIDATIONS

*of UN Lighting Regulations as a
tool to support the
homologation process*



UP-TO-DATE INFORMATION

*on regulatory trends in the
various world regions*



THE STRUCTURE

**Administrative
Committee
(AC)**

**General
Assembly
(GA)**

**WG Strategy
(WG S)**

**Committee of
Experts (CE)**

**Technical Steering
Committee (TSC)**

Working Groups

Front Lighting (WG FL)
Signal Lighting (WG SL)
Light Sources (WG LS)
Installation (WG I)
Safety and Visual Performance (WG SVP)
Photometry (WG P)

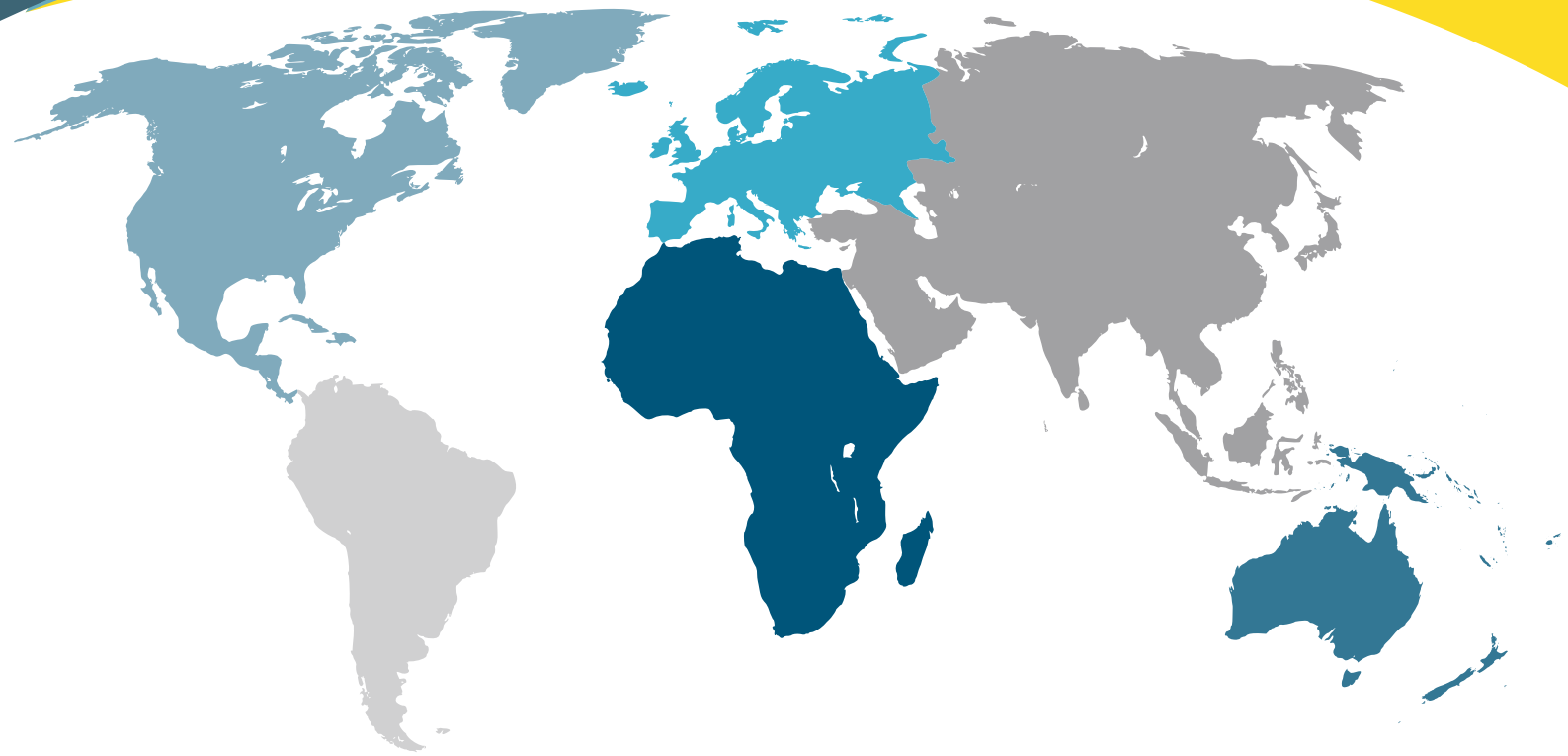
Task Forces

Vehicle-Level Laboratory Testing
Procedure (TF VLLTP)
Glare Control (TF GC)
Apparent Surface (TF AS)
Interactive Social Display (TF ISD)

ADMINISTRATIVE

TECHNICAL





**WE COLLABORATE
WITH**



UNECE



International
Electrotechnical
Commission



International
Organization for
Standardization



International Commission on Illumination
Commission Internationale de l'Eclairage
Internationale Beleuchtungskommission



OUR VISION

Be the partner of choice for
governmental regulatory bodies and
the worldwide centre of competence for
all automotive lighting-related innovation makers

OUR MISSION

Bring together the expertise of our global membership to promote safety, avoidance of regulatory barriers and the removal of unnecessary administrative burden to innovation and international trade



OUR TARGETS

Actively support GRE to:

- Develop safety regulations to enable the international use of new technologies;
- Improve and simplify the existing lighting and light-signalling UN Regulations.

Sponsor independent international research to provide a scientific base as supporting rationale for the ongoing development of Regulations.



The International Automotive Lighting
and Light Signalling Expert Group

If you already belong to one of the GTB member delegations,
ensure that you derive full benefits from being part of the
global lighting expert group.

**If your company or organization is not yet represented in GTB,
consider joining an existing GTB member, or applying for GTB
membership through a suitable national association in your country.**

For further information please contact:

GTB Secretariat

secretariat@gtb-lighting.org

www.gtb-lighting.org

